

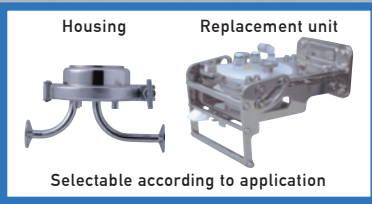
Ez-Change™
Capsule Filter Cartridge

XS Type

Major Applications

Lab-scale evaluation, low-volume production

Examples: Coating liquids, slurries, inks and rare pastes



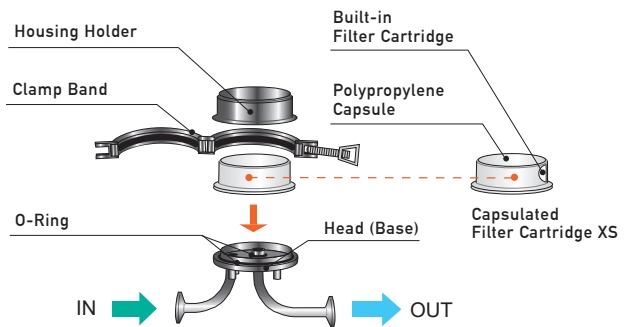
Features

- Polypropylene capsule filter for easy replacement
- Smallest capsule in the Ez-change series
- Compatible with one-touch replacement units (XSES)

Advantages

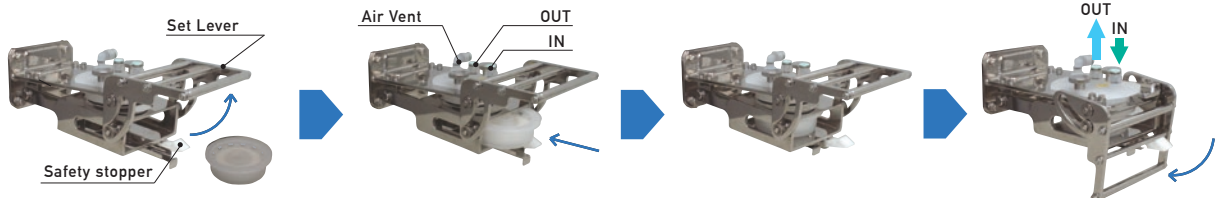
- Liquid is confined, limits exposure.
- Reduction of filter setting errors
- Low liquid loss volume enables cartridge evaluation in small-volume liquid.
- Improving the efficiency of replacement work

Internal structure of Housing (XSDP)



Capsule Filter Housing (XSDP-F6)
Connecting diameter/configuration=IDF6A · Ferrule

How to use Replacement unit (XSES)



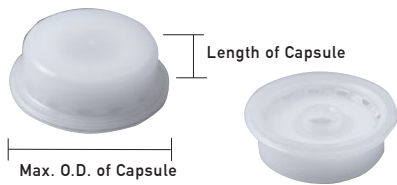
① Push up the set lever by pushing down the safety stopper.

② Insert a Capsule Filter Cartridge.

③ Complete setting by pushing down the set lever until the safety stopper is activated. (The safety stopper feature prevents the set lever bouncing back.)

Capsule Filter Cartridge Specifications

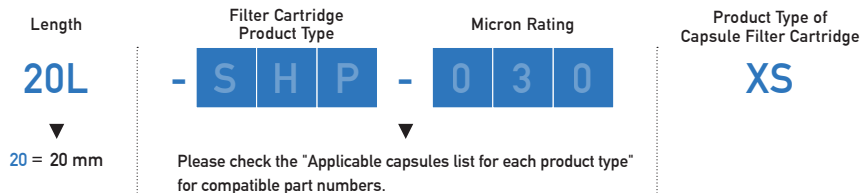
Capsule Filter Cartridge (XS)



Length of Built-in Filter Cartridge	20mm
No. of built-in filters	1pc
Length of Capsule	30mm
Max. O.D. of Capsule	φ 91mm
Capsule material	Polypropylene
Maximum Operating Pressure	Refer to replacement units design pressure.
Maximum ΔP	See catalog for the built-in filter cartridge. (However, cannot be used above the maximum operating pressure.)
Maximum Operating Temp	40°C (104°F)
Liquid loss volume	42ml

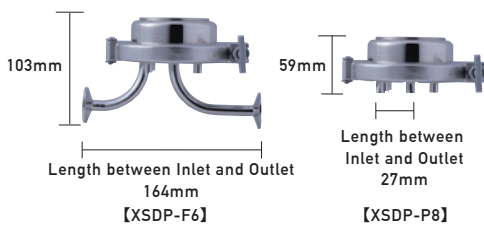
*Please be sure to use the dedicated housing (XSDP)/ replacement unit(XSES).

Capsule Filter Cartridge Ordering Information



Capsule Filter Housing/ Replacement Unit Specifications

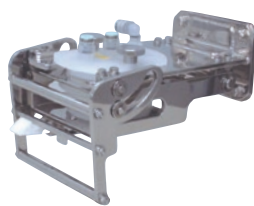
Housing (XSDP)



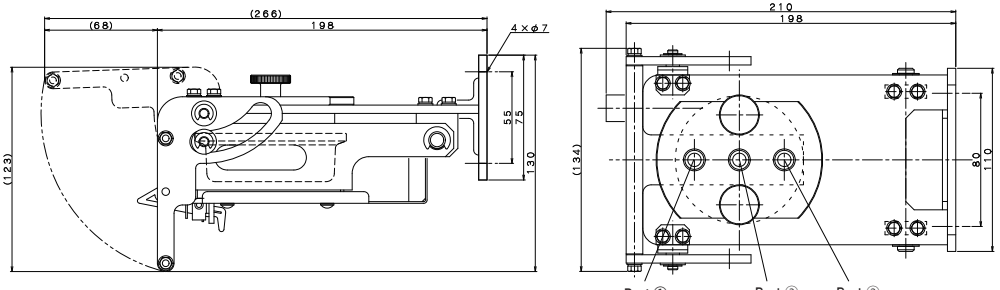
Product Type	Housing		Replacement unit
	XSDP (F6)	XSDP (P8)	XSES
Capsule filter cartridge type	XS		
Connecting diameter/configuration	IDF6A·Ferrule	Rc1/4	Rc1/4 (Port ①, ②, ③)
Housing/ Unit Materials	SUS304		SUS304(Liquid contact area : Polypropylene)
O-Ring material	EPDM/Silicone/NBR/FFKM		
Design Pressure	0.98MPa (142psi)		0.39MPa (57psi)
Design Temperature	40°C (104°F)		

* Please contact us for further information on specifications connecting diameters, configurations, dimensions and units other than above.

Replacement Unit (XSES)

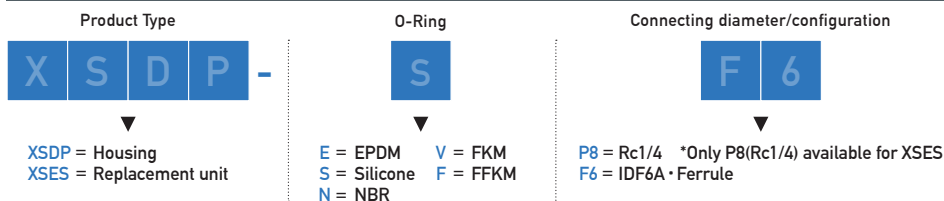


Unit weight: 2.6kg



Port ①, ②: INLET or Air Vent Port ③: OUTLET

Capsule Filter Housing/ Replacement Unit Ordering Information



*The contents of the catalog are subject to change without notice.

*When used for filtration of organic solvents, antistatic measures may be required.

*The performance data listed in the catalog are Typical values obtained under specific conditions based on our tests.

ROKI GROUP International Pte. Ltd.

6-20-12, Minami-Oi, Shinagawa-ku Tokyo, 140-0013 Japan
TEL: +81-3-5764-1131 FAX: +81-3-5764-0681

www.rokiglobal.com

Manufacturing is based on our Quality Management Systems that meet ISO9001 standards.

Scope

Design, Development, manufacture, and sales of filter cartridges, housings and filtration equipment.



JQA-QMA16323

MS CM009

19th Issue
XS210324E